



Optimizing Canvas with Speakology AI

Sarab AL Ani
Arabic Language Program Director
Near Eastern Languages and Civilizations Department

Seamless Integration for Meaningful Communication

What is Speakology AI?

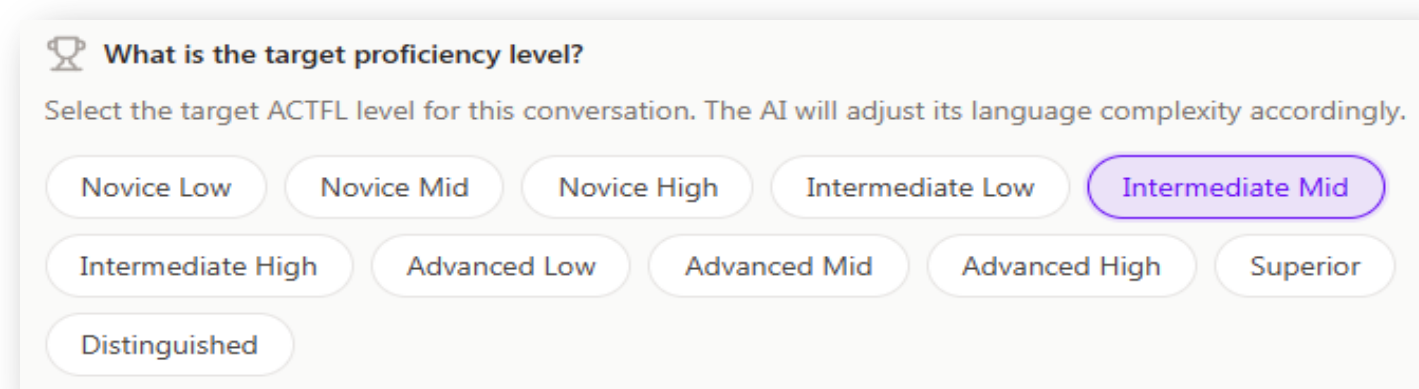
Speakology AI is a specialized language learning platform designed to bridge the gap between classroom theory and real-world conversation.

It utilizes advanced AI avatars to simulate interactive video or phone calls, providing students with a low-pressure environment to practice their speaking and listening skills.

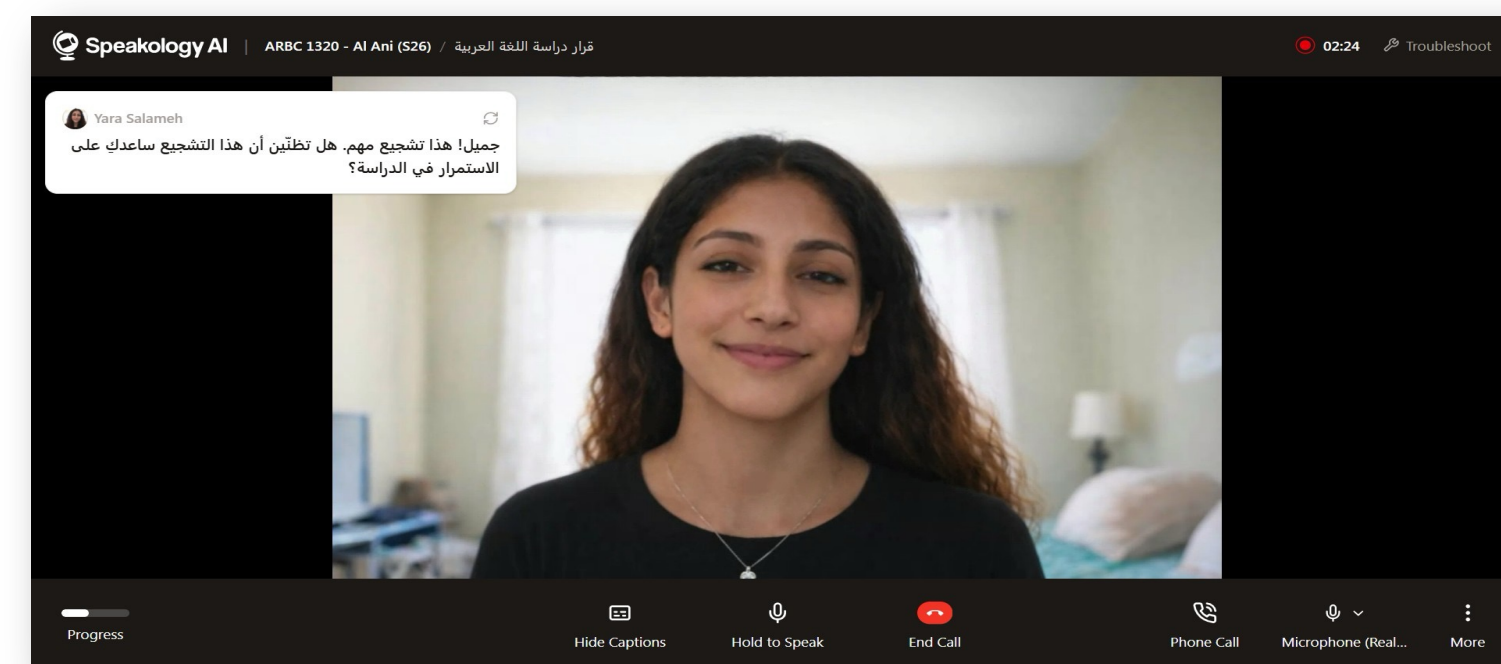


Key Features:

- **Curriculum Alignment:** Unlike general-purpose AI, Speakology is built for educators. Instructors can program AI avatars to follow specific course themes, textbook content, and proficiency targets (such as ACTFL or CEFR levels).



- **Realistic Interaction:** The interface mimics a standard Zoom call. Learners engage with human-like avatars that can respond to spontaneous speech, ask follow-up questions, and provide context using visual aids



- **Privacy & Safety:** The platform is designed for institutional use and is compliant with FERPA, COPPA, and GDPR. Student video is not recorded, reducing privacy concerns and anxiety.

- **Instant Feedback :**

A. During the conversation:

1.Real-time Corrections: Instant guidance on grammar, syntax, or word choice in either the target or native language.

2.Vocabulary Support: Live suggestions or translations to maintain natural conversational flow.

3. Implicit vs. Explicit Feedback:

Educators can set how "vocal" the AI is. For a "Novice" student, the AI might offer more frequent, explicit corrections; for "Advanced" learners, it might use recasts (repeating the student's incorrect sentence in the correct form naturally) to maintain the flow

B. Immediate Post-Session Report:

After the speaking ends, the report is generated **instantly the moment the call concludes**, making it feel like a direct extension of the session. It includes:

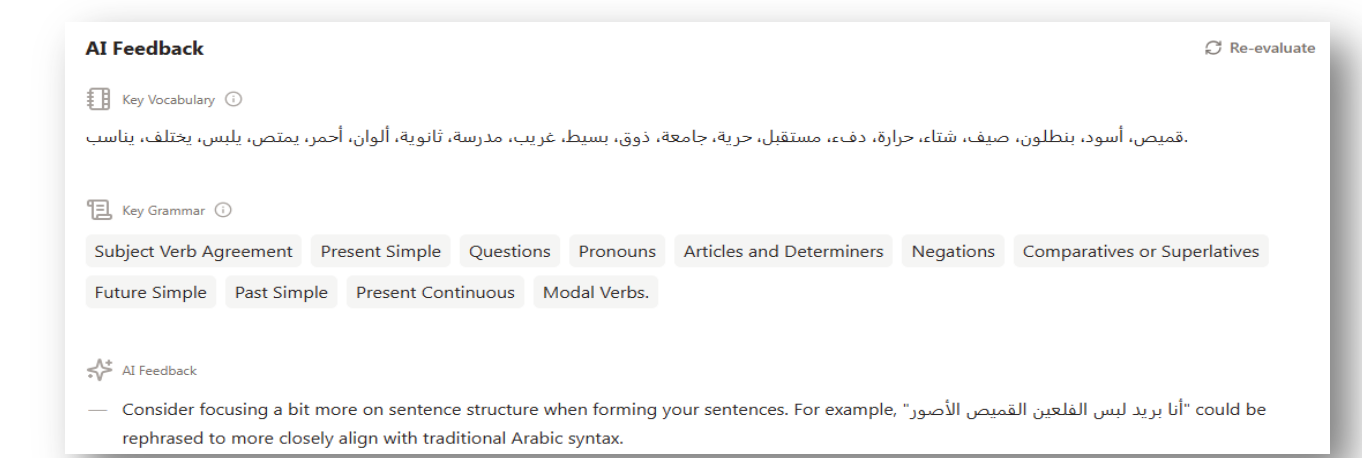
1. Grammar & Pronunciation

Breakdown: Specific instances where the learner excelled or needs improvement.

2. Usage Summary: A list of key structures and vocabulary used during the session.

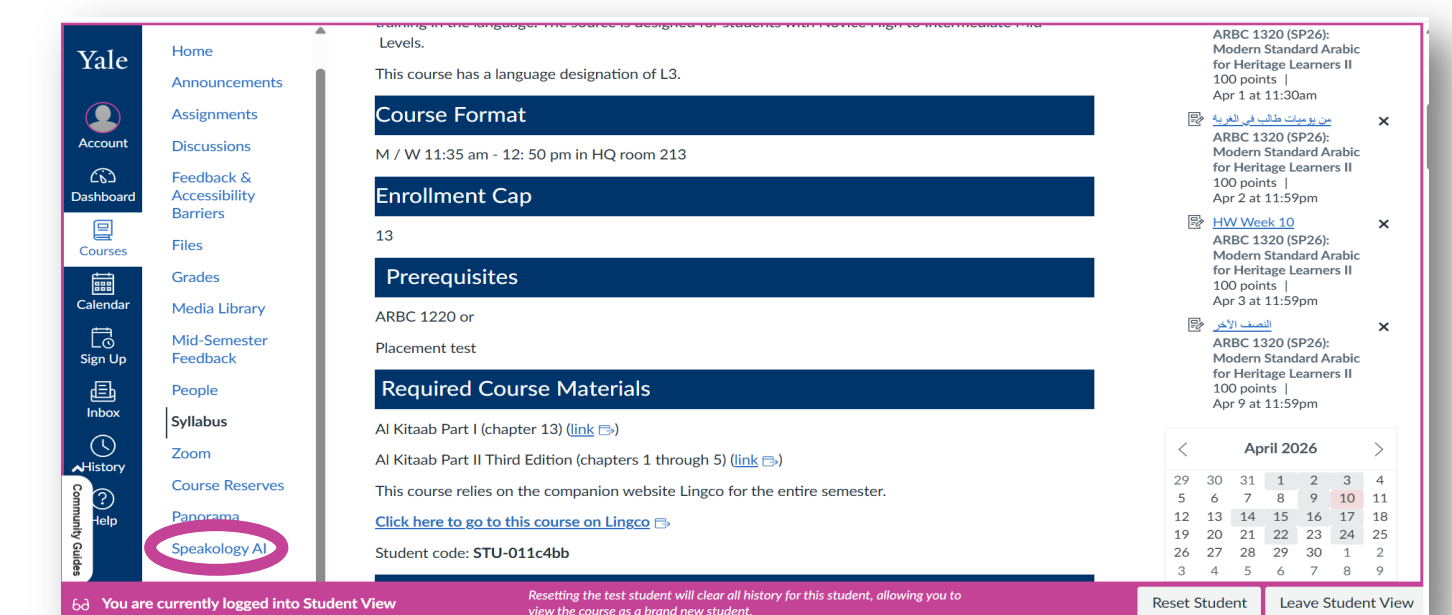
3. Assistance Log: A summary of exactly which words or phrases the student requested help with..

- 4. **Proficiency Mapping:** An estimate of the student's current level based on frameworks like ACTFL or CEFR



Speakology AI in Canvas

At Yale, Speakology AI has currently been added to Canvas navigation menu by the Poorvu Center for Teaching and Learning on a trial bases.



CONCLUSION:

With ACTFL-aligned feedback and the ongoing Yale trial, now is the time to experience this tool firsthand. Design tasks tailored to your students' needs and elevate your next course design.

This project was made possible by the Poorvu Center AI Course Revision grant.